

Great Basin Research and Management Partnership



GBRMP is an integrated research and management organization that promotes comprehensive and complementary collaborations, and provides leadership, commitment and guidance to ensure that the collaborations are effective

<http://greatbasin.wr.usgs.gov/gbrmp/>

2006 Workshop on Collaborative Research and Management

- **200 participants** – federal, state, local, tribal, NGO research & management organizations and other partners
- **Presentations** - how agencies & organizations obtain science information, their priority issues, and available resources & how do we build effective collaborations



www.cabnr.unr.edu/GreatBasinWatershed/Default.aspx

- **Summary** - Great Basin issues and workshop sessions on building collaboration
 - Chambers, J. C., N. Devoe, A. Evenden. 2008. Collaborative management and research in the Great Basin – Examining the issues and developing a framework for moving forward. RMRS-GTR 204.
- **Agreement** - an Integrated Collaborative Framework is needed to facilitate the necessary collaborations to sustain Great Basin ecosystems

[GBRMP Vision



Multi-disciplinary, multi-organizational teams working together to develop solutions to the region's ecological and socio-economic issues using existing management and research frameworks

Federal – State – Local – Tribal – Private - NGO

- Obtain consensus on priority issues
- Address larger spatial and longer temporal scales
- Cross organizational and administrative boundaries

Partner Organizations

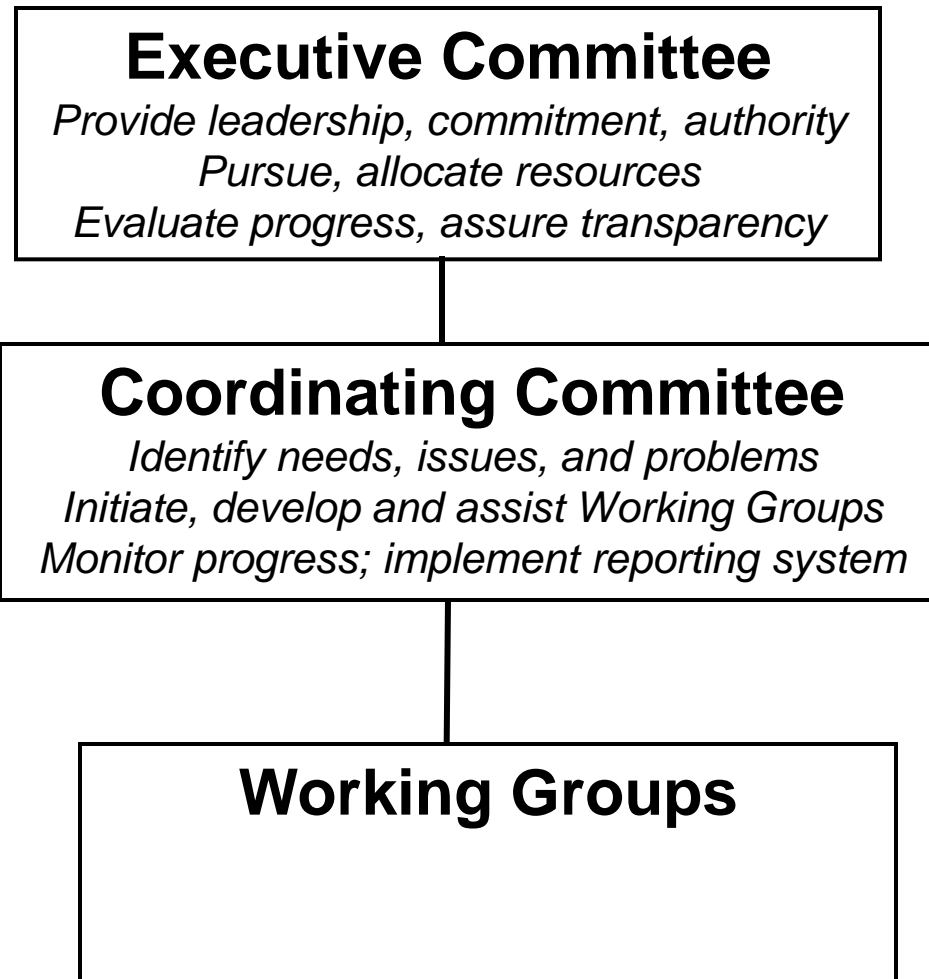
- Desert Research Institute
- Idaho State University
- Oregon State University
- University of Nevada, Reno
- University of Nevada, Las Vegas
- Utah State University
- Nevada Department of Wildlife
- Utah Department of Natural Resources
- National Aeronautics and Space Administration
- National Park Service
- Natural Resources Conservation Service
- US Fish and Wildlife Service
- US Geological Survey
- USDA Agricultural Research Service
- USDA National Institute of Food and Agriculture
- USDA Forest Service, Region 4 and Rocky Mountain Research Station
- USDI Bureau of Land Management
- ❖ ***Provisions to be all inclusive***

[GBRMP Goals]

Promote comprehensive and complementary collaborations

- Maximize integration of science and management through partnerships and enhanced science translation and delivery
- Provide leadership and commitment through an integrated organizational framework
- Expand and facilitate inter-disciplinary, multi-organizational teams
- Commit and leverage limited resources, minimize duplication, and pursue additional support and resources toward shared goals
- Implement communication and information sharing that enhances problem solving, demonstrates measurable results, and increases public support for Great Basin sustainability

GBRMP Structure



Working Groups

Information Management Working Group

Facilitate communication and information sharing:

- Develop/maintain web-based clearinghouse and other communication tools*
- Coordinate with other working groups*



Science and Technical Working Groups

Address priority research issues like climate change, invasive species and fire

- Synthesize & share existing information*
- Collect data on areas where information gaps are identified*
- Develop recommendations that provide the basis for action*



GBRMP Unique Contributions

Webbased Clearinghouse of Information

- Linked to USGS National Biological Information Infrastructure, Great Basin Information Project
- Cooperative effort among USGS Snake River Field Station, RMRS and OSU
- Continued support from the JFSP Great Basin Outreach Project and USDA NR II REENet Project for Managing Invasive Bromes
 - Data Base of Collaborators
 - Expert's Data Base
 - Research Catalog and The Science Locator
 - Bibliography (>5,000 citation on Great Basin)
 - Upcoming Meetings and Links
 - Metadata Server

<http://greatbasin.wr.usgs.gov/gbrmp/>

GBRMP Unique Contributions

Workshops and Symposia

- Collaborative Research and Management, Reno, NV 2006
- Ecological Society of America, Organized Oral Session on “Alternative Futures for the Great Basin,” San Jose, CA 2007
- Society for Range Management. Symposium on “New Paradigms for Collaborative Research and Management in the Great Basin.” Billings, MT 2011

GBRMP Unique Contributions

Syntheses of Critical Issues

- USDA Forest Service, RMRS, General Technical Report “COLLABORATIVE MANAGEMENT AND RESEARCH IN THE GREAT BASIN – *Examining the Issues and Developing a Framework for Action*” RMRS-GTR-204
- Restoration Ecology Manuscript “*Great Basin Research and Management – Priority Issues for an Imperiled Ecosystem*” 2009



GBRMP Unique Contributions

Working Groups

- Information Management – Website. Sean Finn, USGS Lead.
- Invasive Species – Current emphasis on invasive brome grasses via funded REENet Program. Matt Germino, ISU Lead.
- Cheatgrass Die-off – New emphasis on causes of & solutions for cheatgrass die-off. BLM, regional research agencies and universities. Don Major, BLM Lead.
- Monitoring – Emphasis on synthesizing information on existing monitoring programs and developing linkages among them. Sue Phillips, USGS Lead.
- Science Delivery – Focus on mechanisms for sharing and disseminating research and management information on critical issues. Linked to JFSP Science Delivery Program. Mike Pellant, BLM Lead.

GBRMP Strategic Plan

- Work towards effective regional communication and collaboration
- Implement, endorse and expand existing GBRMP efforts
- Continue to address new regional/consensus needs
- Develop mechanisms for organizational funding/support
 - Opportunities for multi-organizational activities – grants, etc.
 - Congressional contacts
 - Foundations, etc.

