

Targeted Grazing Demonstration Areas

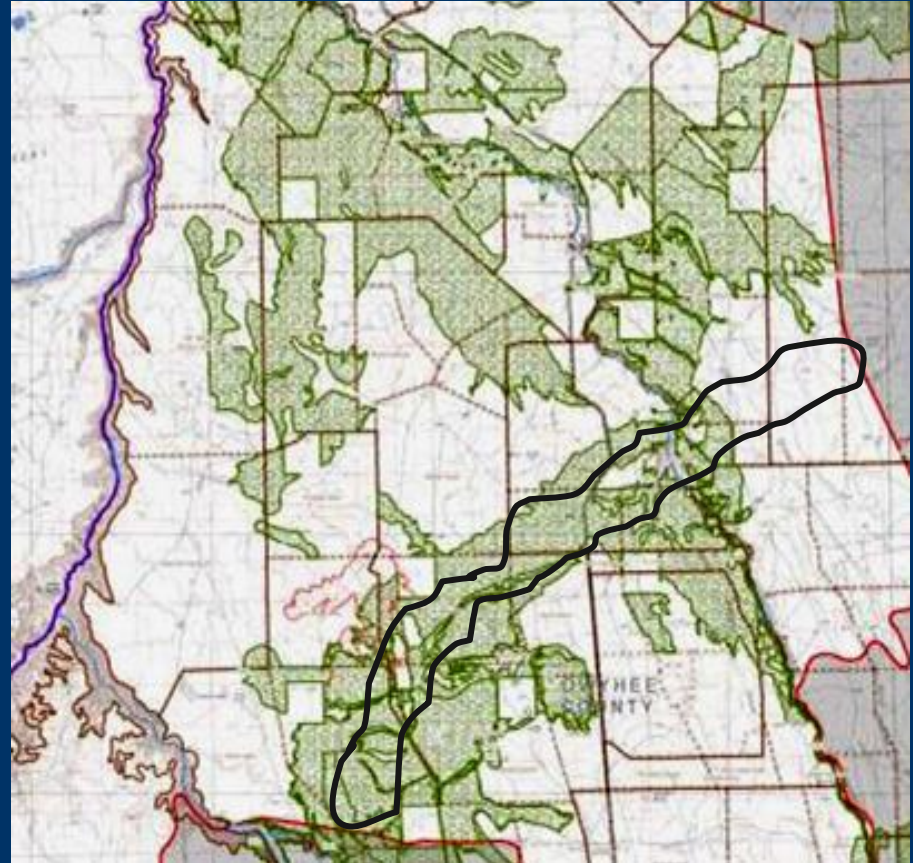
Objective is to test the potential to strategically reduce fine fuels with targeted livestock grazing at a large scale.

Guiding principles were developed to provide a framework to identify potential demonstration areas in the Great Basin.

Can targeted livestock grazing be used to strategically reduce fine fuels at a landscape scale?

Hypothetical Example

Strategic targeted grazing is meeting fuels management objectives prior to the fire season in interconnected "bands or zones" within and across management units (e.g., landscape scale)



Targeted Grazing Demonstration Areas Framework

- A targeted grazing plan/agreement will be developed cooperatively by livestock managers and agency personnel (BLM, NRCS, States, etc.)
- Targeted grazing is not intended to create fuel breaks in intact stands of sagebrush. Can be used to manage fine fuels in established fuel breaks (e.g., greenstrips or mowed fuel breaks)

Targeted Grazing Demonstration Areas Framework

- Targeted grazing objectives will be measured by a standardized monitoring protocol during and after the use period that quantifies the effects of targeted grazing on demonstration areas.
- Based upon monitoring results, adjustments in livestock management should be implemented during and the following growing season if resource or livestock issues are significant.

Targeted Grazing Demonstration Areas Framework

- In dry springs or during droughts, livestock use will be curtailed if fine fuels are not producing enough biomass to require a fuel break
- Initial demonstration area results will be closely watched and used to inform application in other areas. Need to implement and monitor projects to the best of our ability.