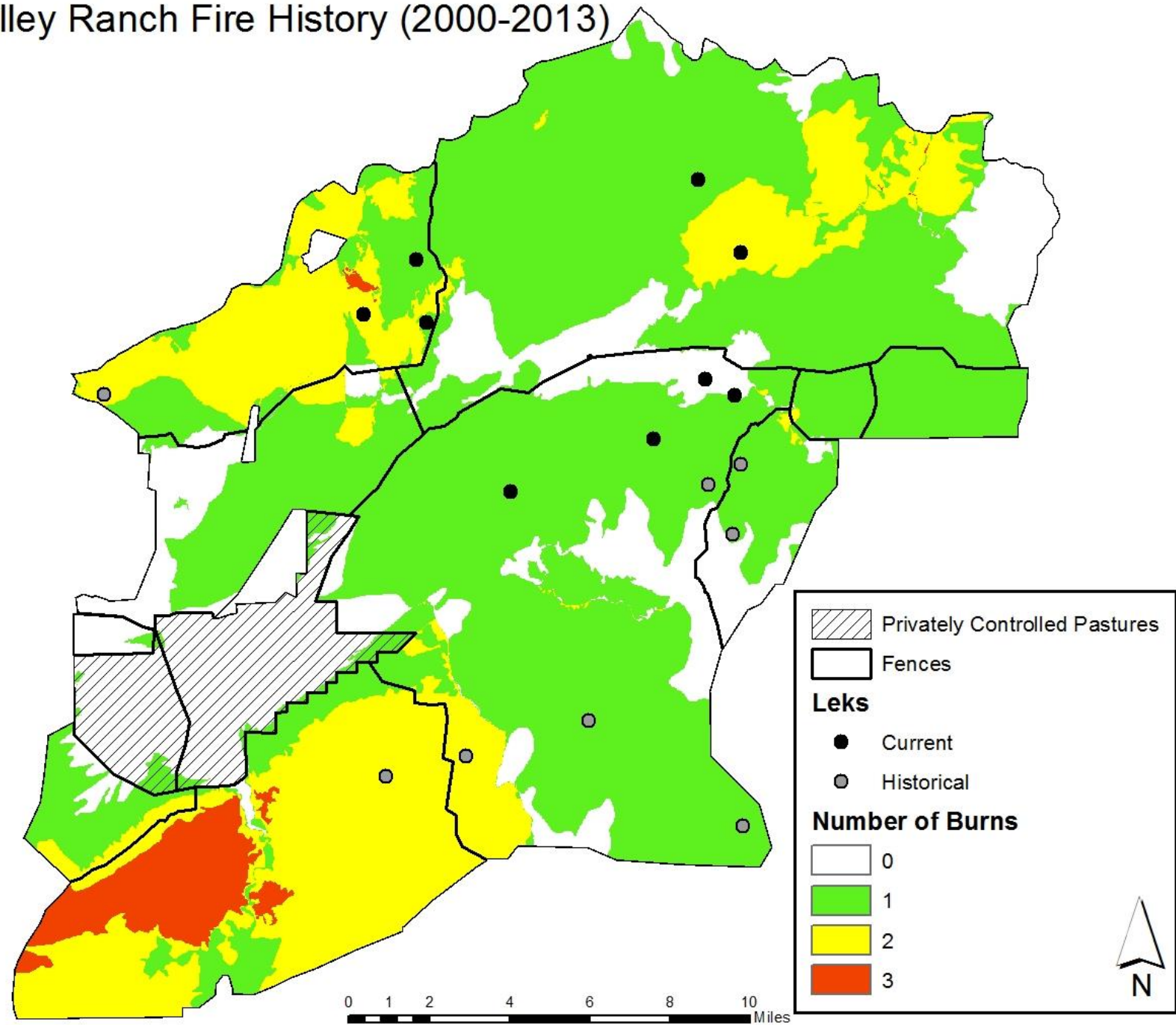


# Timing of Grazing as a Tool in Fire Mgt

# Squaw Valley Ranch Fire History (2000-2013)



Dominant season grazed  
pasture; remains green into  
July

Ungrazed pasture; very volatile  
in July

Fence Line



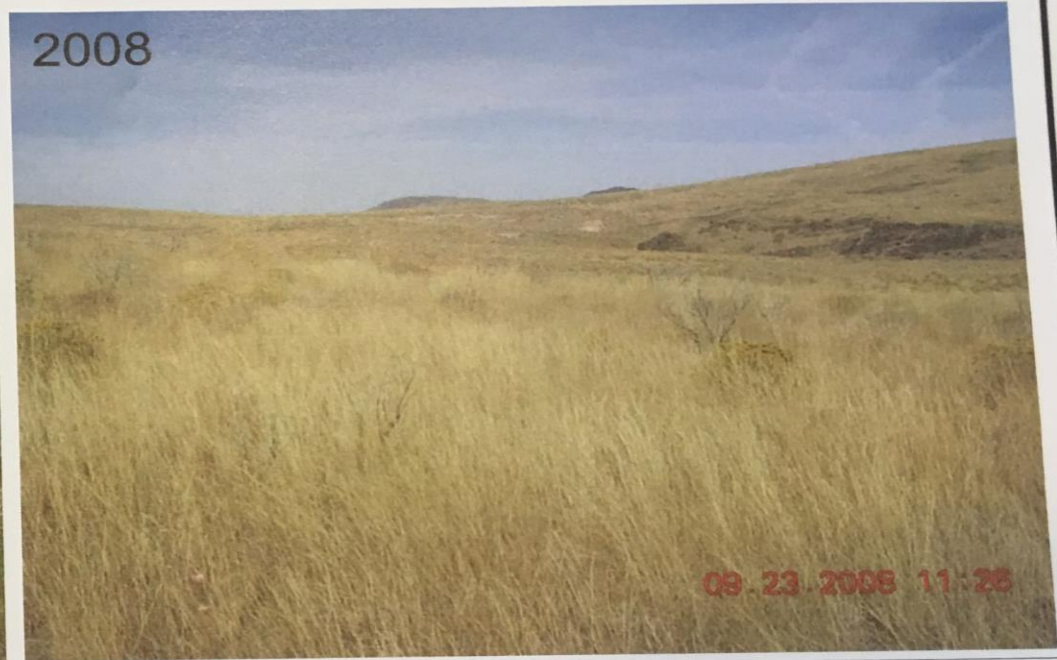


NV060403CM19

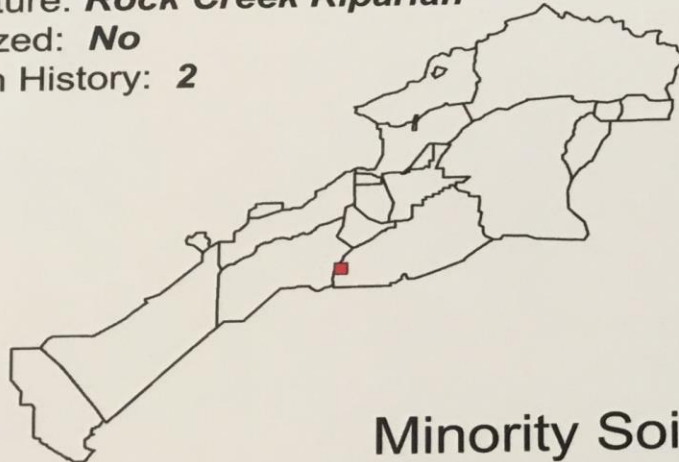
2003



2008

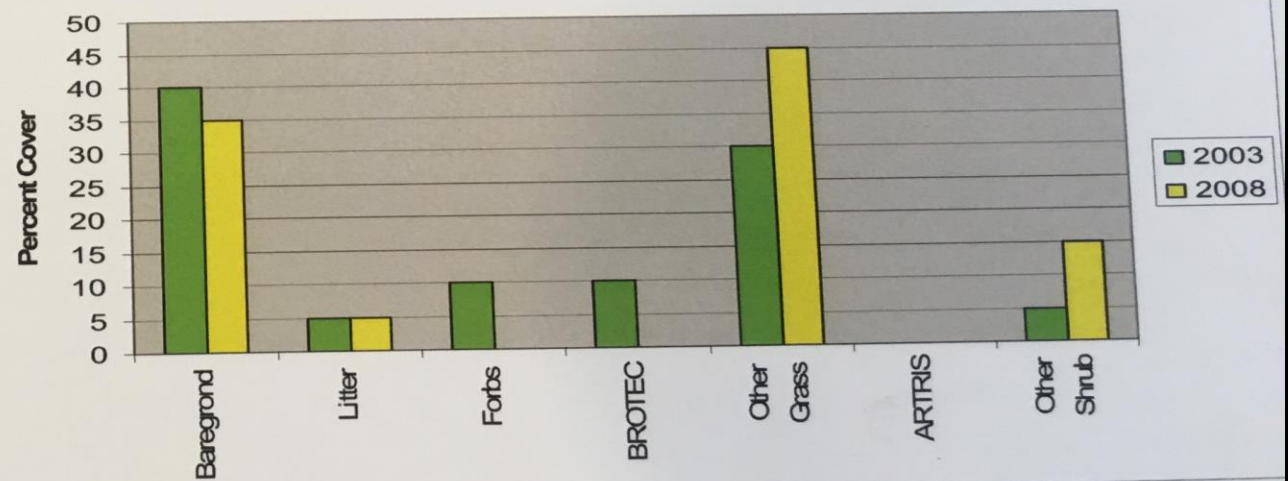


Ecological Site: **Loamy 10-12 PZ**  
 Pasture: **Rock Creek Riparian**  
 Grazed: **No**  
 Burn History: **2**



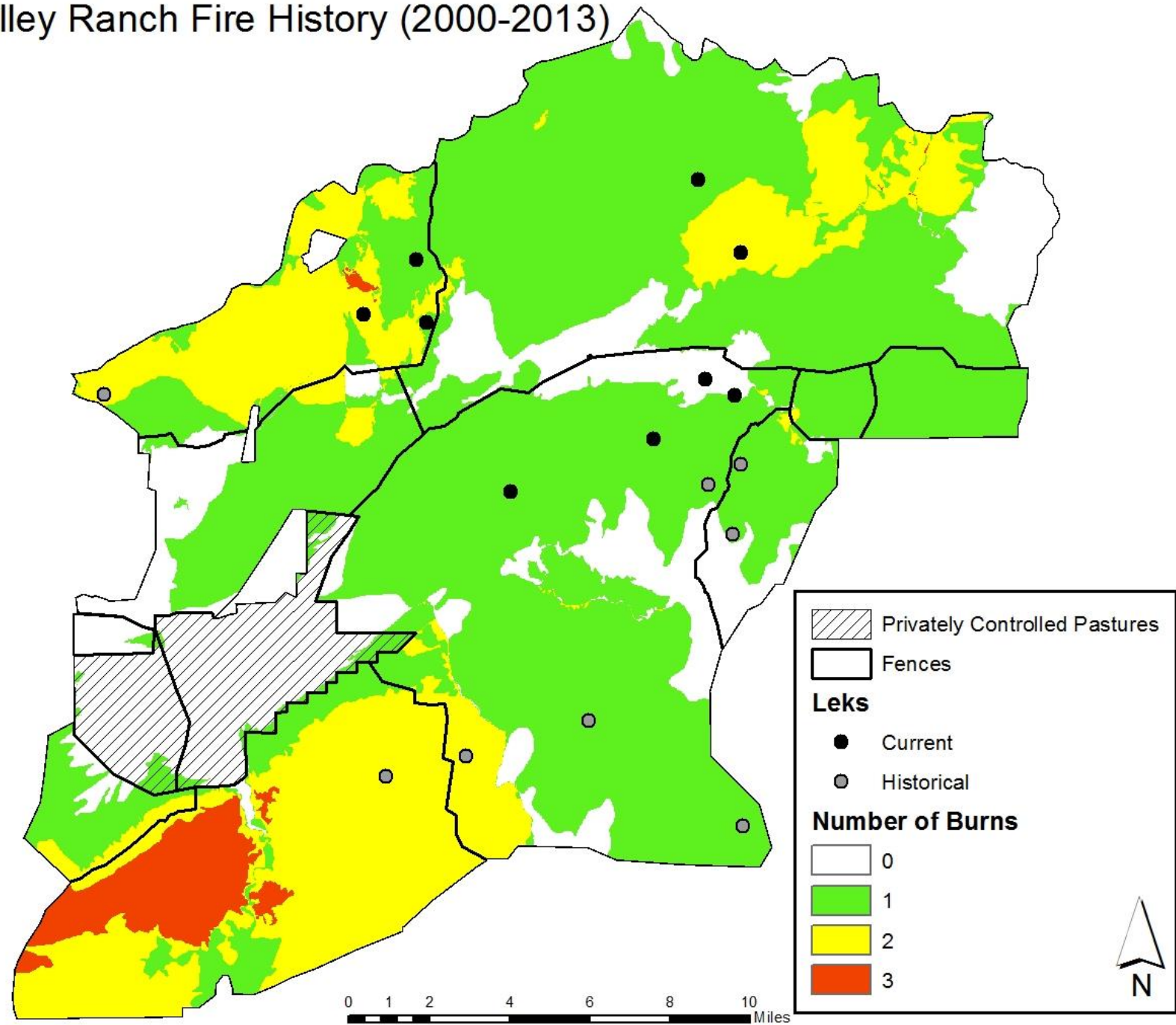
Minority Soil

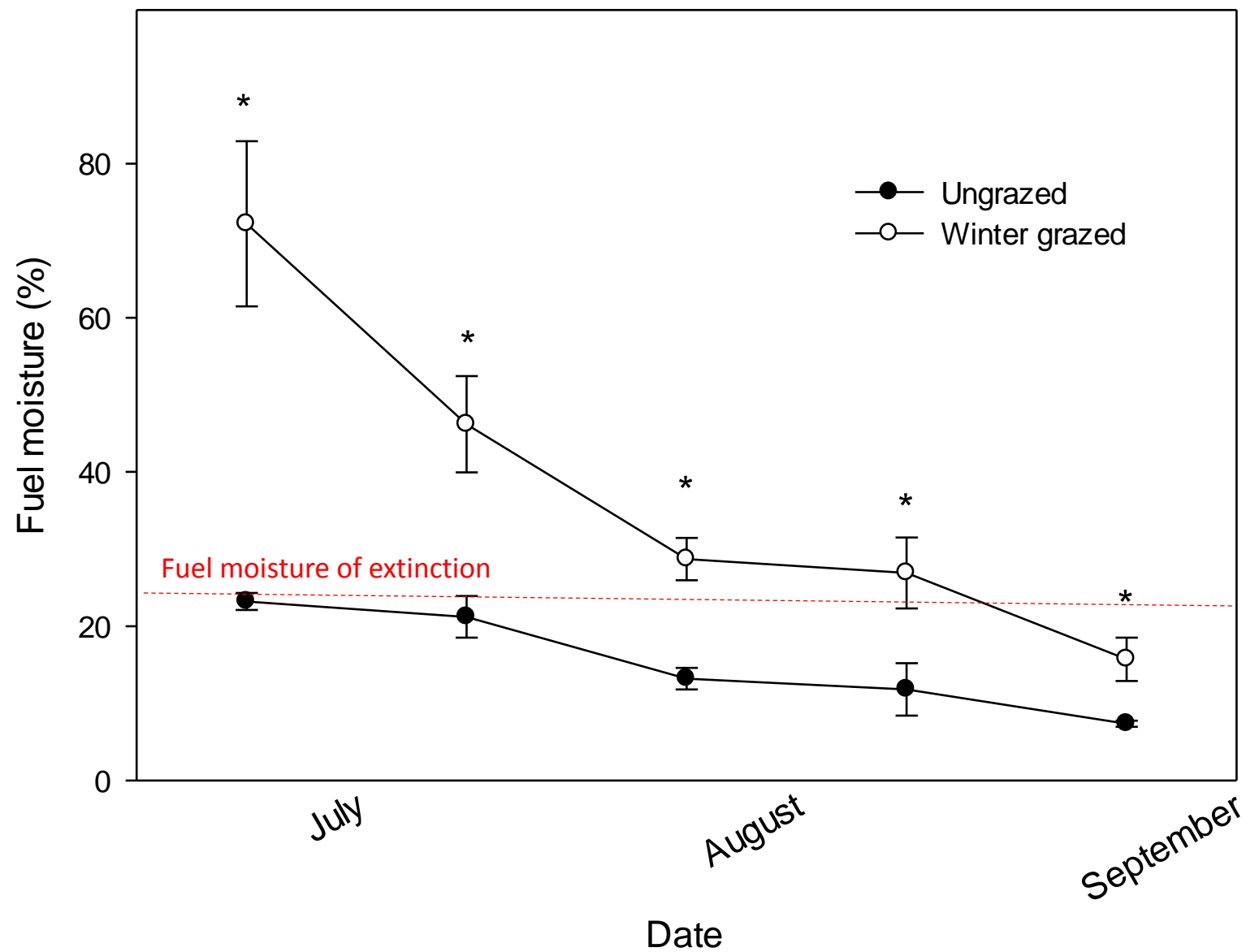
NV060403CM19



Treatments	Grazed	
	2003	2008
Elevation	4777	
Samples	100	
Bareground	33%	30%
Litter	20%	29%
Cheatgrass	18%	9%
Perennial Grass	8%	12%
Sagebrush	7%	4%

# Squaw Valley Ranch Fire History (2000-2013)







A wide-angle photograph of a dirt road winding through a desert landscape. The road is reddish-brown and has two distinct tracks. The landscape is covered in low-lying, dry vegetation. In the background, there are rolling hills under a blue sky with some clouds. Two areas are labeled: '1 Burn' on the left and '2 Burns' on the right.

1 Burn

2 Burns



# Upper Rock Creek





